

Spotlight Service

Prelude Welcomes..... Peter Becker Community. Peter Becker Community partnered with Prelude as a Full Service Client in February 2011.

What is Peter Becker Community?

Peter Becker Community is a Continuing Care Retirement Community (CCRC) – offering comprehensive lifetime range of care from residential living to nursing care.

Peter Becker Community residents enjoy senior friendly residential housing choices of cottages or apartments with the knowledge that if they become sick or frail their needs will continue to be met. Solutions are provided for concerns regarding security, changing health status, and home maintenance. Apartments and cottages also provide access to special services, including an on-campus YMCA, stimulating programs, seminars, and various activities.

At Peter Becker there are three levels of housing and care: 1) Residential Living 2) Personal Care and 3) Nursing Care. Since support is offered to residents for changing health needs, residents can move up or down the continuum of care depending on the extent of their health needs.

For people who want to enjoy simply comfortable living and a built-in support system, Peter Becker Community is a great choice!



This issue

From the desk of the CEO **P.1**

Tips to manage your files better **P.2**

MIMI Motion Into Meaningful Motion **P.3**

Events **P.4**

From the Desk of Dennis Stufft, CEO

Why we use Citrix

When Prelude opened its doors in 1998, we built a network enabling us to manage local software and hardware from a central location. Every facility had servers and server support software requiring facility employees to be responsible for managing backups. If updates or upgrades were needed, every computer had to be manually configured. Managing this type of network was both costly and inefficient. We needed to provide a better solution, hence the implementation of Citrix.

The company Citrix was founded in 1989 by former IBM developer Ed Iacobucci in Richardson, Texas. Citrix was originally named Citrus but changed its name after an existing company claimed trademark rights. The Citrix name is the portmanteau of Citrus and UNIX.

The company's first product was Citrix MULTIUSER. The product failed to find a market. This was due in part to Microsoft declaring in 1991 that it was not going to support the operating software used by Citrix. From 1989 to 1995, the company did not turn a profit. In 1989 and 1990 there was no income at all. Between 1991 and 1993, Citrix received funding from Intel and Microsoft as well as venture capitalists. Without the help of this funding, Citrix would not have survived. The company went public in December 1995.

Since then, Citrix has set the standard as the leading software platform for providing an efficient and cost-effective means of remotely accessing a bevy of software applications.

To understand how Citrix works, it's helpful to compare your home and work PC. Your home PC has software stored on it's hard drive (C drive). If you use Microsoft Office Word at home, it opens from your hard drive. If you access a web site at home, data is loaded onto your computer from that web site.

On your work PC, no software programs and data are loaded onto your PC. These programs are housed on a server at Prelude and are accessed through Citrix.

Citrix enables us to offer a faster and more reliable network for your critical IT resources. Later this year, a new release will be rolled out that runs better and allows you to open a program faster. In a future article, I will explain how network traffic is managed more efficiently through the use of Citrix.

Prelude *Services*[®]
Improving business through innovative technology

Prelude promotes from within.

Outstanding Prelude Employees:

Mark Kahley has accepted the position of Network Team Leader and will lead the networking group in strategic planning and new initiatives. In the past 7 years, Mark's technical skills have enabled Prelude to move forward with innovative technology keeping Prelude on the cutting edge.

Tim Hambright has accepted the position of Infrastructure Team Leader and manages a staff responsible for ensuring the stable operation of Prelude's IT infrastructure. Tim has been with the company for 13 years and has played a key role in maintaining the infrastructure that services our clients.

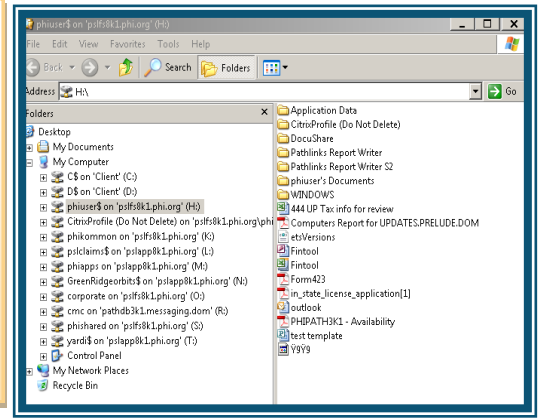
Prelude New Hires

Tonya Gilmore joined Prelude Services in February 2011 as an Associate Project Manager. Tonya brings with her over eleven years of project management experience in the technology industry and has been with companies such as Essential Enterprise Solutions, Foot Locker, Inc, EUR Systems, and EDS.

Joe Traynor joined Prelude in February, 2011 as a Marketing & Sales Consultant. He has 20 years of experience in the IT industry and spent the last four years working for MDI Achieve selling software and services.

Joe and his family live in Murfreesboro, Tennessee. He will be focusing his marketing efforts on expanding our presence in Ohio and surrounding states. Joe will also take an active role in our software sales efforts. He will lead the expansion of our new partnership with Premier Coaching & Training who will be offering the Census Improvement Program (Referral Management) system that Prelude developed for Presbyterian Senior Living.

File Management Tips



The tips in this article can help you learn how to better manage and organize computer files. After you've decided on a strategy for organizing and managing files and folders, we bet you'll see improved time management skills and increased productivity.

1. Adopt consistent methods for file and folder naming. When learning how to manage files and folders, it is important that you develop a naming scheme for the kinds of files you create most often and then stick to it.

- To change an existing file or folder name, **right-click** the name in the folder structure. Click **Rename**, and then type the new name.

2. Keep names short. Even though you can use long file names in Windows, you should not necessarily do so. Long file names can be harder to read. Use common abbreviations such as "mtg" for meeting or "ACTG" for accounting when naming files.

3. Use common names. Name your files and folders with easily found names to make it easier to search for them.

4. Avoid large folder structures. If you need to put so many subfolders in a folder that you can't see all of them at a glance, consider creating an alphabetic menu.

5. Organize files by date. Use a date in the document name. For example, 'jim051810' refers to Jim's file from May 18th, 2010. The goal when naming files is to be able to tell what the file is about without having to open it and look.

6. File early, save often. The best time to file a document is when you first create it. Use the "Save As" dialogue box to file your document as well as name it. Save it in the right place the first time.

7. Clean out your files regularly. Keep your folders uncluttered by clearing out old files. You can create "Old" or "Inactive" folders to move older files out of your working folders.

http://www.microsoft.com/atwork/productivity/files.aspx?WT.mc_id=E-mail

MIMI is a health monitoring solution that transfers **Motion into Meaningful Information**

Providing an unobtrusive way to monitor Activities of Daily Living . . . because RIGHT NOW matters most



MIMI transfers Motion into Meaningful Information by providing an advanced mobile health monitoring service that provides an electronic safety net for seniors as they go about their activities of daily living.

MIMI, powered by AFrame Digital, is uniquely designed to automatically analyze and develop personalized care models from information collected over time. MIMI enables caregivers and communities to deliver proactive care, averting crises and allowing for earlier intervention.

MIMI provides

- Wearable health monitor and duress device
- Impact/ fall detection
- Approximate location information

- Inference engine to help detect changes in health status
- FDA cleared and HIPAA compliant health monitoring system
- Protecting seniors no matter where they live
- Peace of mind to loved ones

A Wearable Monitor

The MIMI solution includes a wrist-worn, personalized device that monitors an individual's activity, location, and physiological status in real time, indoors or outside. The watch contains sensors to detect impacts or falls and provide an alert without the push of a button. It also includes an emergency call button, so users can request help manually if needed.

MIMI learns an individual's baseline and takes a proactive approach to health and wellness

by personalizing the solution for each user. Alerts are based on the individual's baseline of information to develop a long-term profile of an individual's wellness status.

Fashionable analog watch with date and time display, waterproof and available in a variety of colors

Medical monitor identifies activity and behavior patterns, and skin temperature

Safety monitor detects impacts like those in a fall, includes duress button, and provides location

Meets the highest regulatory standards, FCC Certified, IEC Safety, FDA Cleared, HIPAA compliant, encrypted data transmissions

Personal monitor with unique ID to verify who is where and what action is being taken, includes privacy button

If you would like to learn more about MIMI and the Personalized Inference Engine and how to extend MIMI, please feel free to contact your Prelude Account Manager.



Certification news..

Prelude carries many technical certifications that include Software, Hardware, and Project Management

Microsoft Partner Network

Microsoft launched the Microsoft Partner Network at the end of 2010 replacing the Gold Certified and Certified levels of the Microsoft Partner Program. Branding for the former Microsoft Partner Program may be used through October 2011. The Microsoft Partner Network will now be Gold or Silver in a specific area or areas, but will not be Certified or Gold Certified as a company. Although the criterion to obtain competencies has changed, Prelude Services is confident that objectives will be met in 2011.



Achievement of Silver or Gold demonstrates an organization's ability to meet Microsoft's standards for competencies which includes the successful

implementation of business solutions and passing Microsoft exams and assessments.

The Microsoft Competencies are:

- Desktop
- Server Platform
- Mid market Solutions Provider
- Business Intelligence

In order to qualify for the competencies, Prelude had to follow an intense process to certifications, assessments and projects.





Meet Prelude

Deanna Wimmer has been with Prelude since Sept 2008. She is the team lead for Prelude's Application Support group. Her team includes two groups - Application Analysts and Business Systems Analysts. These two groups support approximately 200 applications including clinical, financial, payroll, HRIS, maintenance and more. Her department focuses on all of the application upgrades and new application implementations, working with clients to improve the usage and performance of the software when possible.

Prelude's a Great Place to Work:

- Prelude Services offers employees a great place to grow and build a challenging career. We are focused on providing our clients with the balance of IT services, support, and exceptional customer service. We hire team players who are not only interested in advancing their careers, but motivated to do their best work in supporting our clients

EYE ON IT



To contact our Human Resources Department, please call 717-441-2411(direct) or 800-579-1047, option 1.

We would love to talk with you!

Prelude news Issue 04 April 2011

Prelude Services[®]

3911 Hartzdale Drive
Camp Hill, PA 17011
TEL (800) 579-1047
FAX (717) 441-2410
www.preludeservices.com

Events

- 2011 AAHSA Future of Aging Service Conference - April 11 - 13, 2011 Washington, DC, Booth 717
- PANPHA Annual Conference and Exposition - June 15th & 16th, 2011, Hershey, PA, Booth 29
- AOPHA Annual Conference and Trade Show - September 7 - 9, 2011, Columbus, OH
- 2011 AAHSA Annual Meeting and Exposition - Oct 16 - 19, 2011 Washington, DC, Booth 2415

Prelude provides the following Services

- * Consulting Services *Project Management Services *Outsourcing *Telecommunications
- *Training *Software Hosting *Software Development * Resident Services